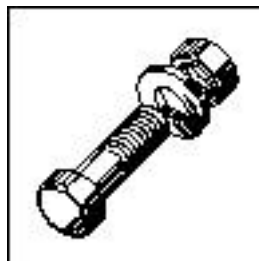


**UW135 / H**



Spare Parts

**Contents**

Frame and panels .....	4
Hood mecanic .....	5
Hood guide .....	6
Hood .....	7
Wash and rinse system .....	8
Strainers .....	9
Racks and track .....	10
Pump .....	11
Drain .....	12
Tank heating and float switch .....	13
Temperature and conductivity probe .....	14
Hydraulic cylinder .....	15
Fill and hood hydraulic pipework .....	16
Rinse booster heater, electric 9 - 18 kW .....	17
Rinse booster heater, steam or hot water .....	18
Pipework – steam, hot water .....	19
Control box .....	20
Table and scrapping system .....	21
Pipework – rinse pressure pump .....	22
Rinse agent dispenser .....	23
Detergent dispenser .....	24
Vacuum breaker .....	25
Splash guard .....	26

**Inhalt**

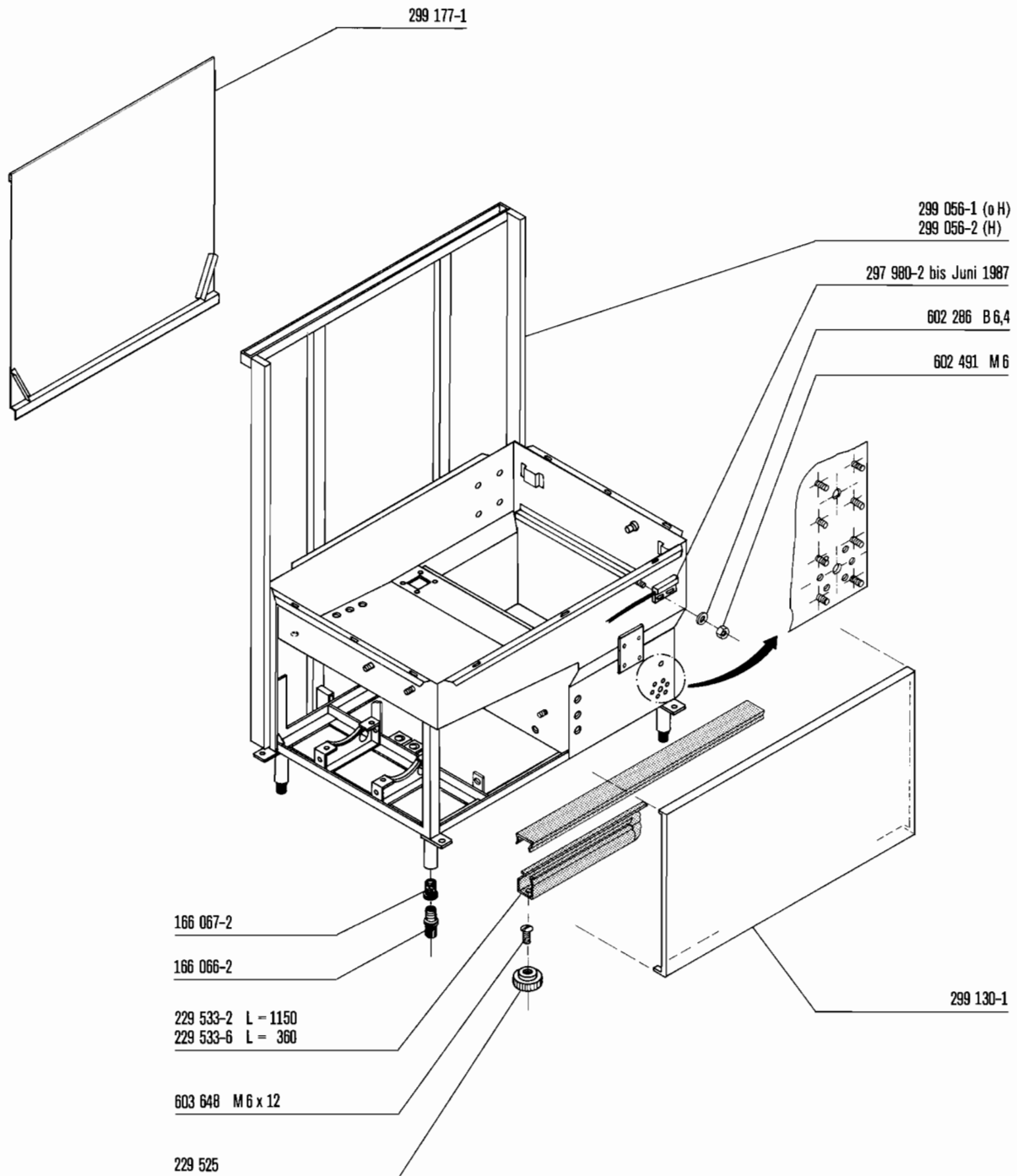
Tankgestell und Verkleidungen .....	4
Haubenmechanik .....	5
Haubenführung .....	6
Haube .....	7
Waschsystem .....	8
Siebsystem .....	9
Körbe und Laufschienen .....	10
Pumpe .....	11
Ablauf .....	12
Tankheizung und Schwimmerschalter .....	13
Temperatur- und Leitwertfühler .....	14
Hydrozylinder .....	15
Fülleitung und Haubenhydraulik .....	16
Durchlauferhitzer, elektrisch 9 - 18 kW .....	17
Durchlauferhitzer, Dampf oder Heißwasser .....	18
Rohrleitungen Dampf, Heißwasser .....	19
Schaltkasten .....	20
Tisch- und Vorspülsystem .....	21
Rohrleitungen Drucksteigerungspumpe .....	22
Netzmittel Dosiergerät .....	23
Reinigungsmittel Dosiergerät .....	24
Rücksaugeverhinderer .....	25
Spritzblech .....	26

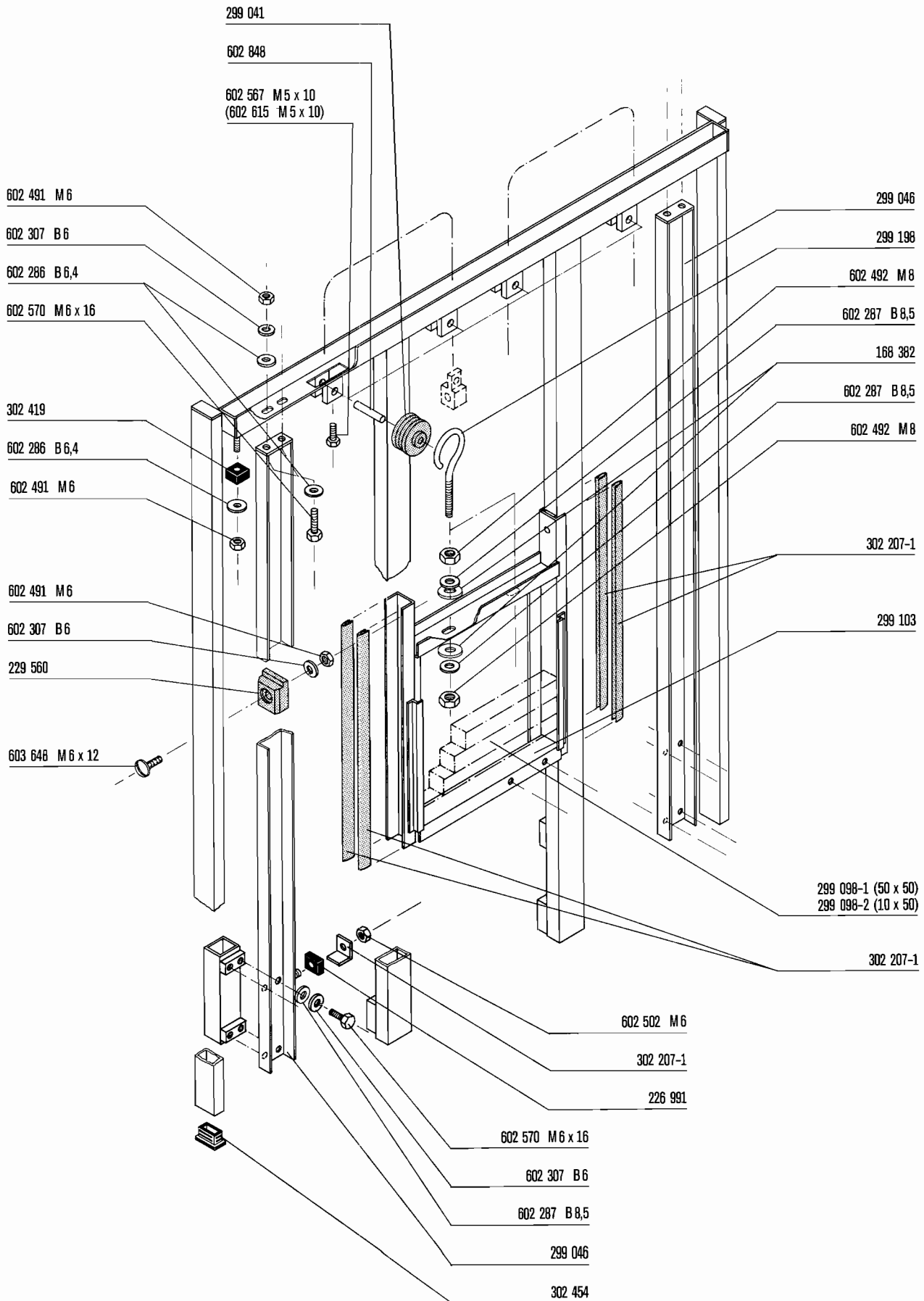
**Sommaire**

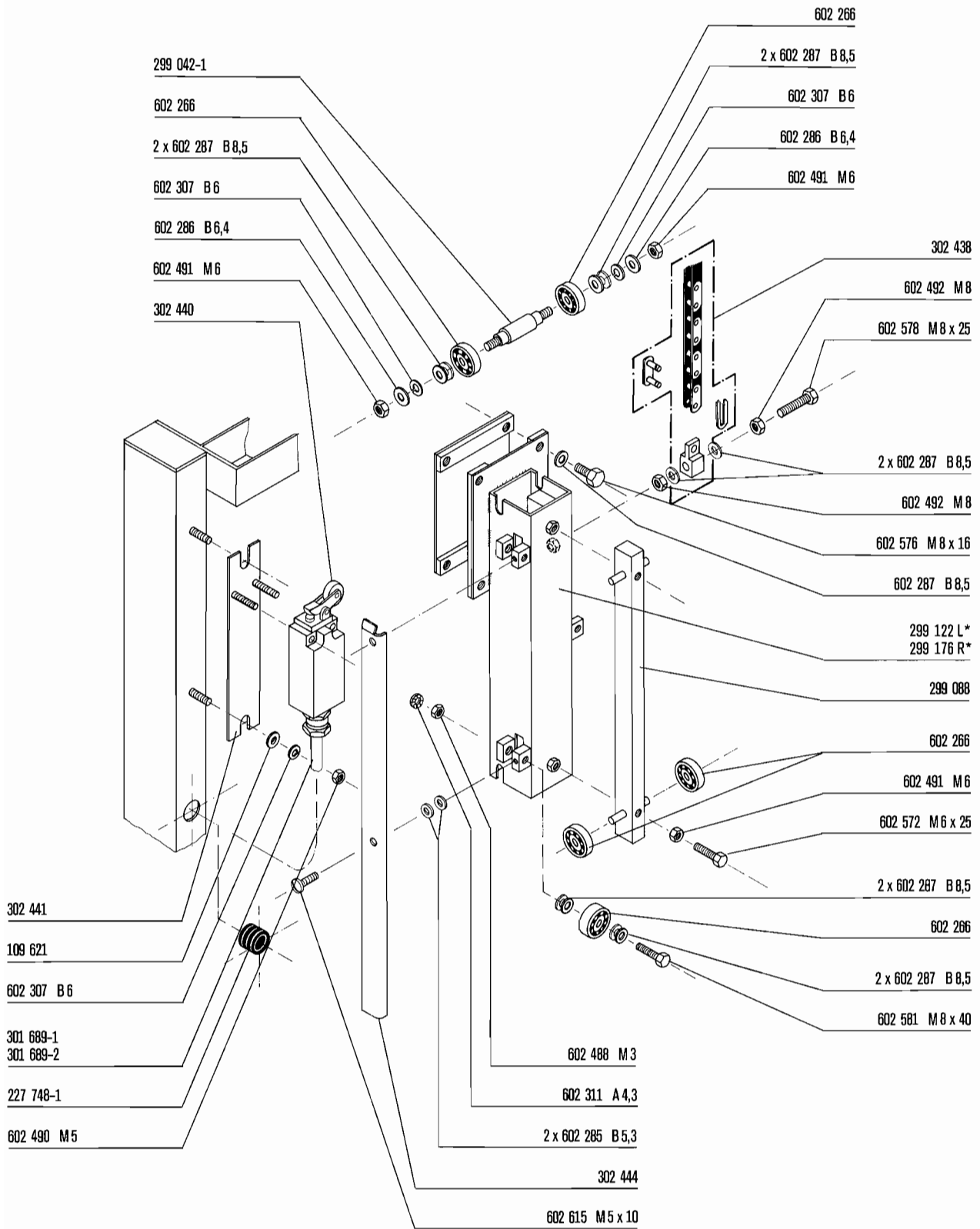
Chassis et panneaux .....	4
Mécanique caisson .....	5
Glissière de caisson .....	6
Caisson .....	7
Système de lavage et de rinçage .....	8
Filtres .....	9
Paniers et rails .....	10
Pompe .....	11
Vidange .....	12
Chauffage de bac et interrupteur à flotteur .....	13
Sondes de température et de conductivité .....	14
Cylindre hydraulique .....	15
Conduites de remplissage et d'hydraulique du caisson .....	16
Surchauffeur, électrique 9 - 18 kW .....	17
Surchauffeur, vapeur ou eau surchauffée .....	18
Conduite de vapeur, d'eau surchauffée .....	19
Coffret de commande .....	20
Table et système de pré-lavage .....	21
Conduite de la pompe de rinçage .....	22
Doseur de produit mouillant .....	23
Doseur de produit tensio-activ .....	24
Brise-vide .....	25
Tôle anti-éclaboussure .....	26

**Inhoud**

Tank en panelen .....	4
Kapmechanik .....	5
Kapgeleiding .....	6
Kap .....	7
Was en spoelsysteem .....	8
Zeeven .....	9
Rekken en rekken rails .....	10
Pomp .....	11
Afvoer .....	12
Tankverwarming en zwemschakelaar .....	13
Termometer en huls en geleidingsmeting .....	14
Hydraulische cylinder .....	15
Vulleiding en hoed hydraulic .....	16
Booster, elektrisch 9 - 18 kW .....	17
Booster, stoom of heet water .....	18
Waterpijp – stoom, heet water .....	19
Schakelkast .....	20
Tafel en voorspoelsysteem .....	21
Waterpijp voor spoeldruk pomp .....	22
Spoelmiddel-doseerapparaat .....	23
Wasmiddel-doseerapparaat .....	24
Vacuumbreaker .....	25
Spat plaat .....	26

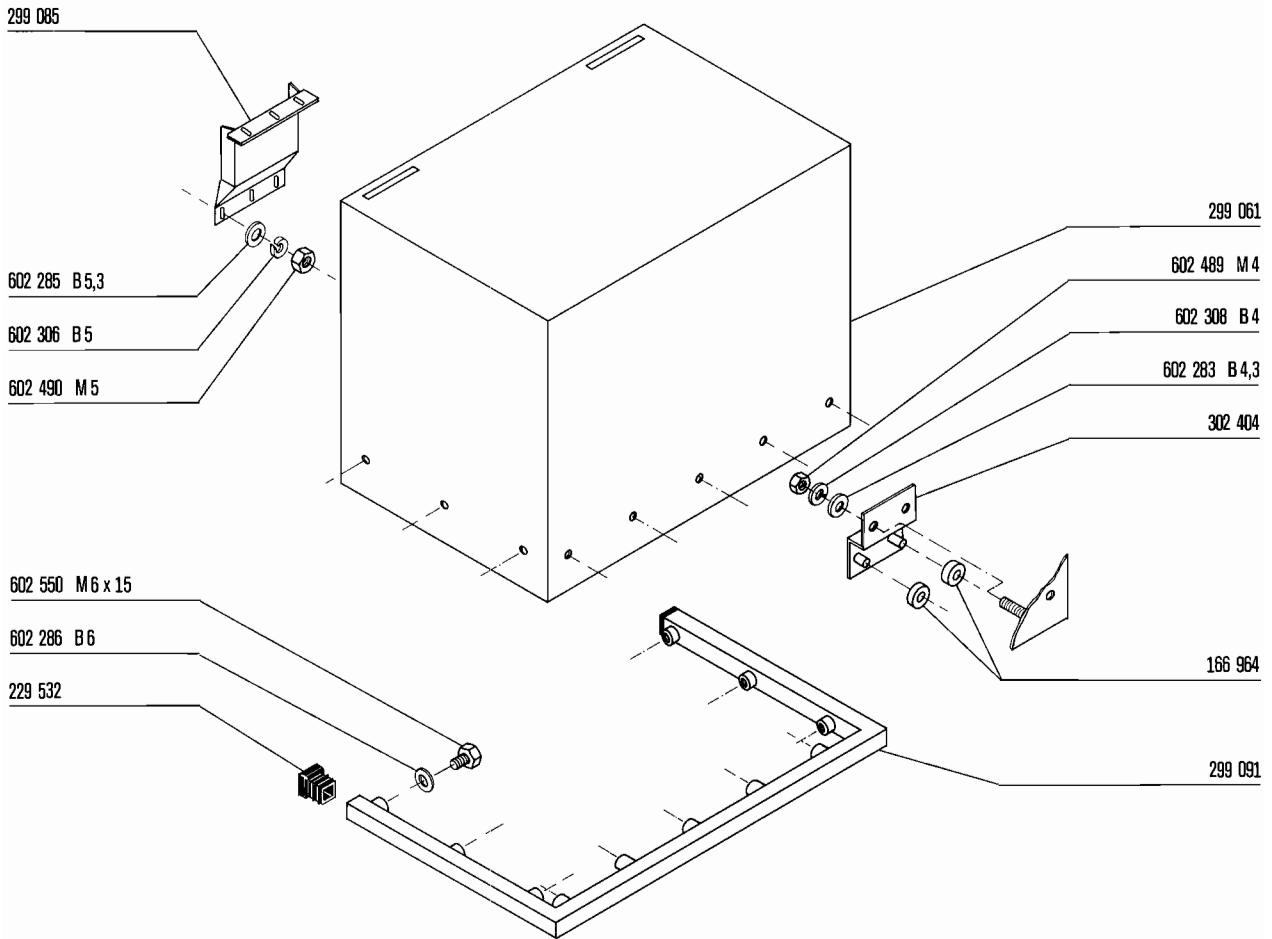


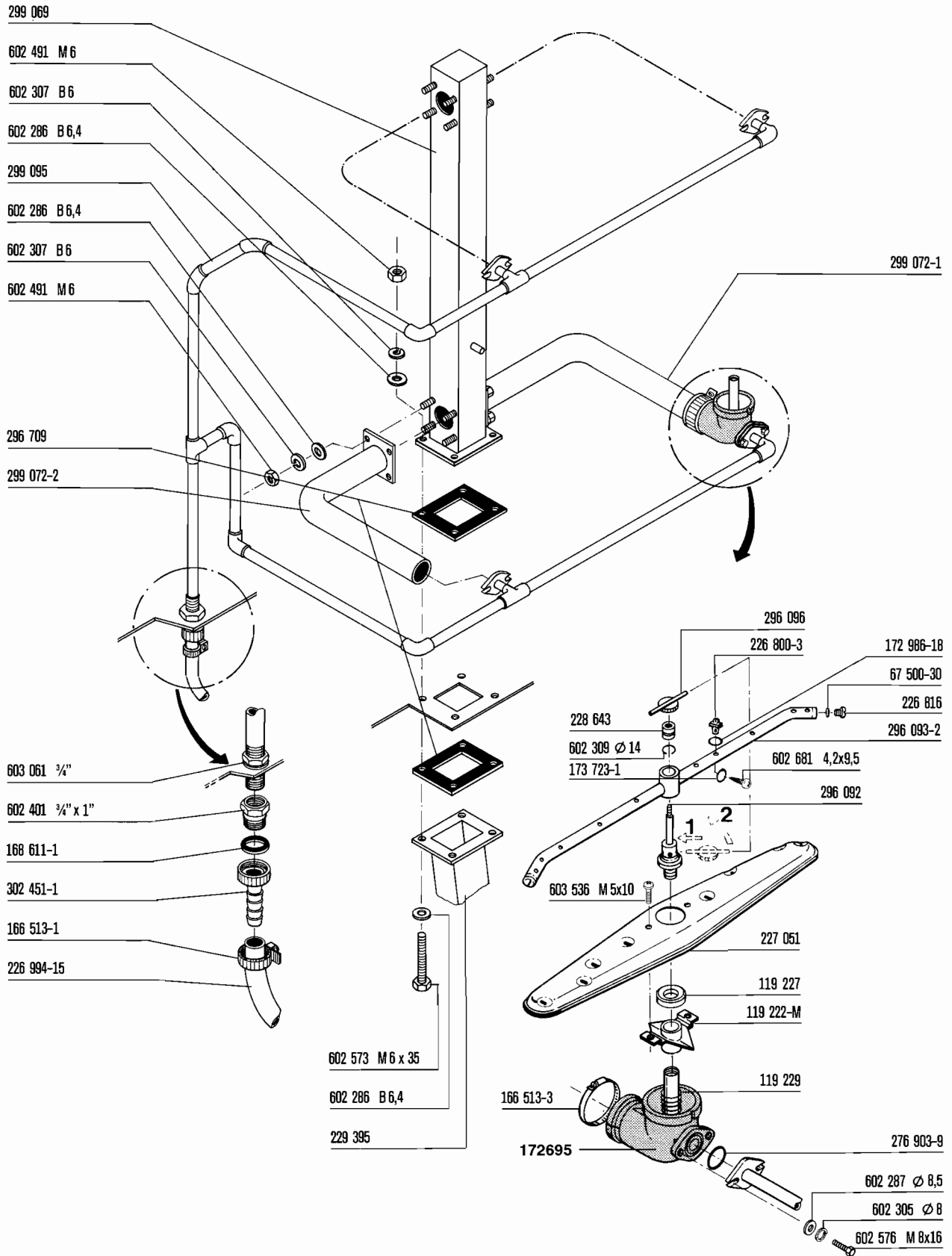


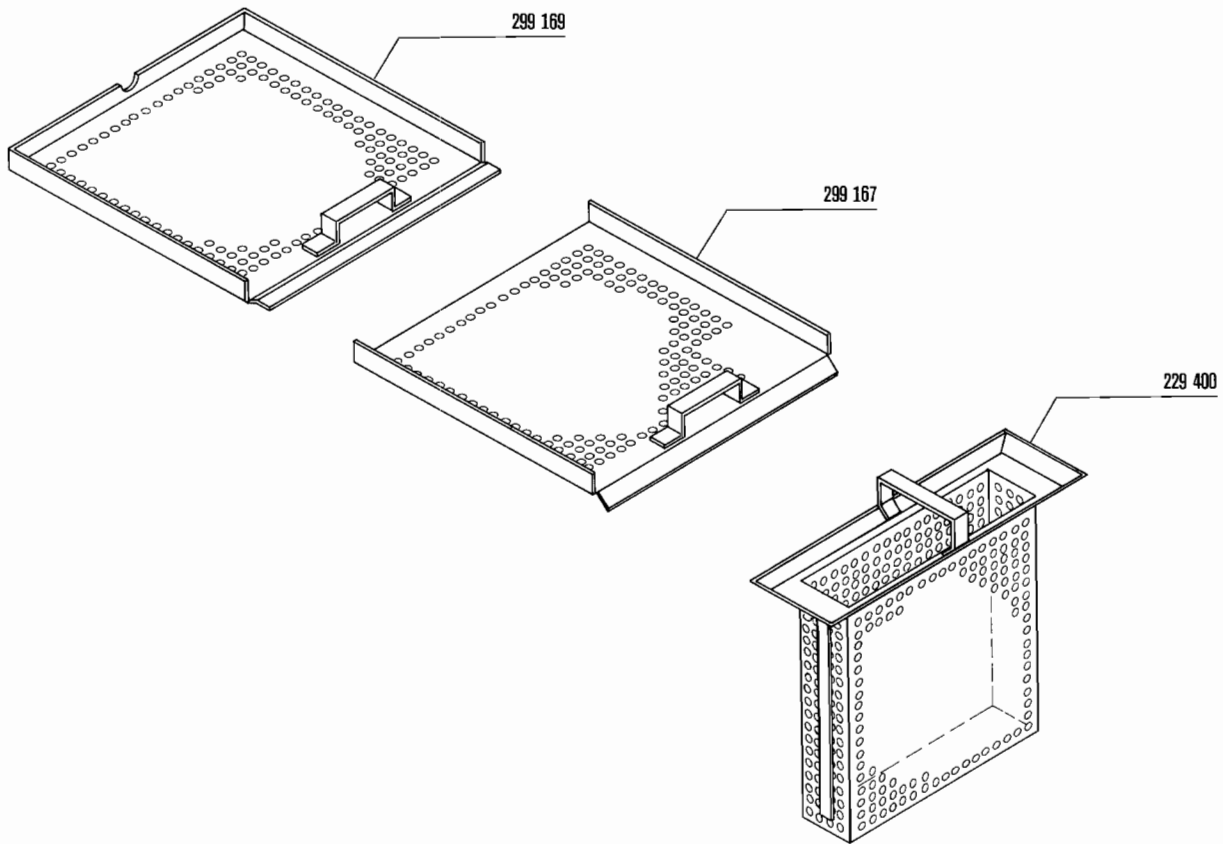


\*L = left  
 gauche  
 links  
 links

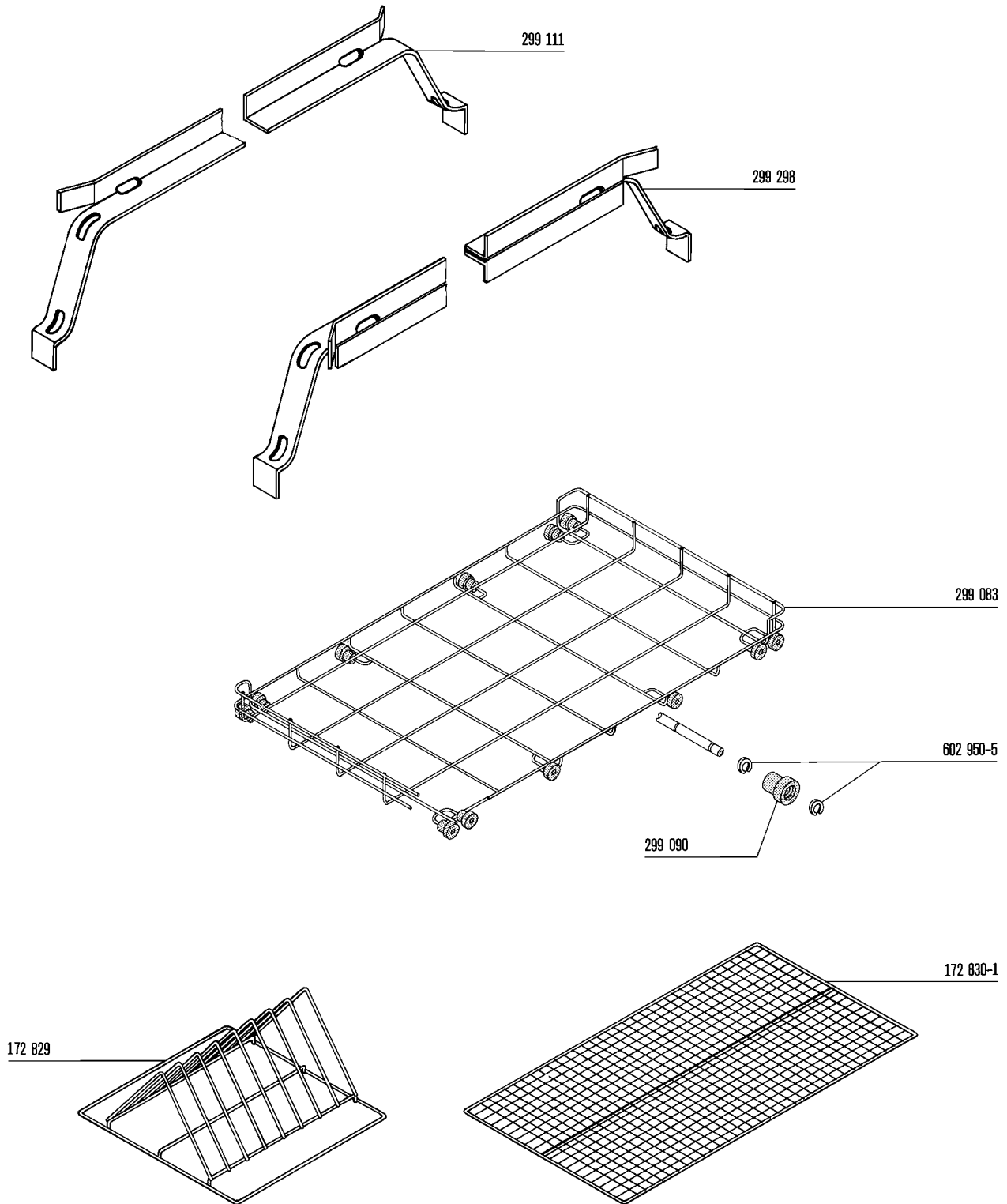
\*R = right  
 droite  
 rechts  
 rechts

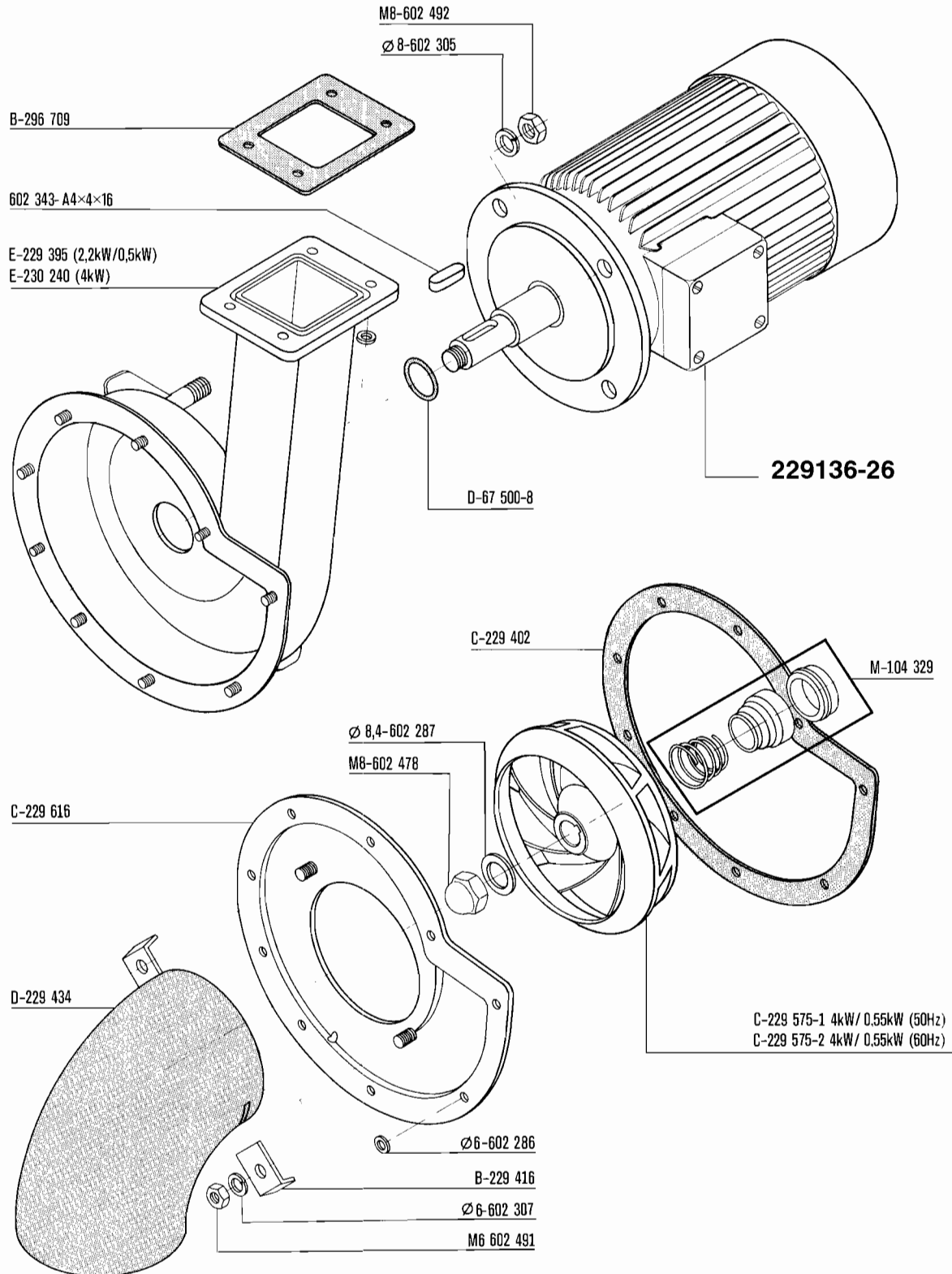


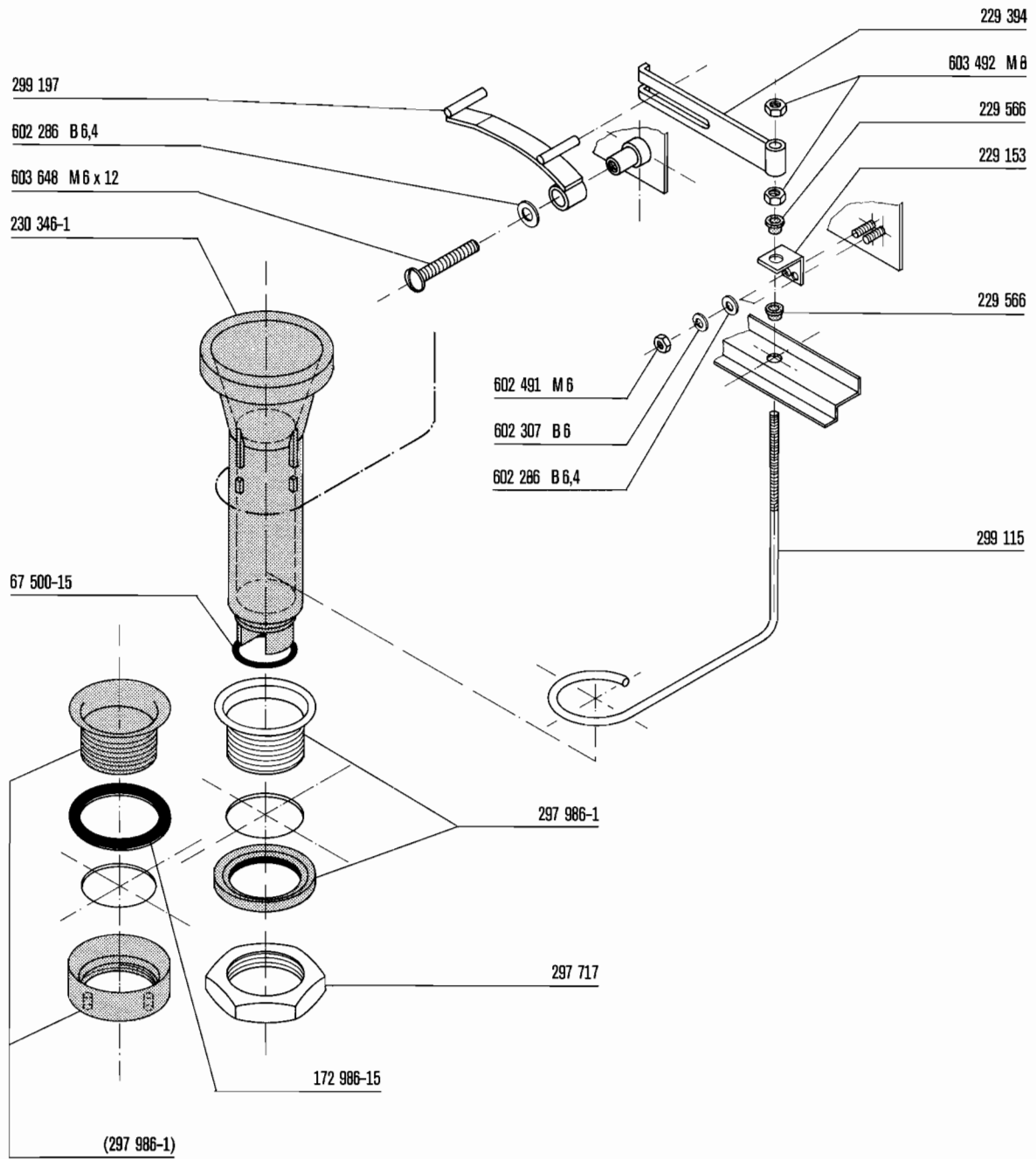


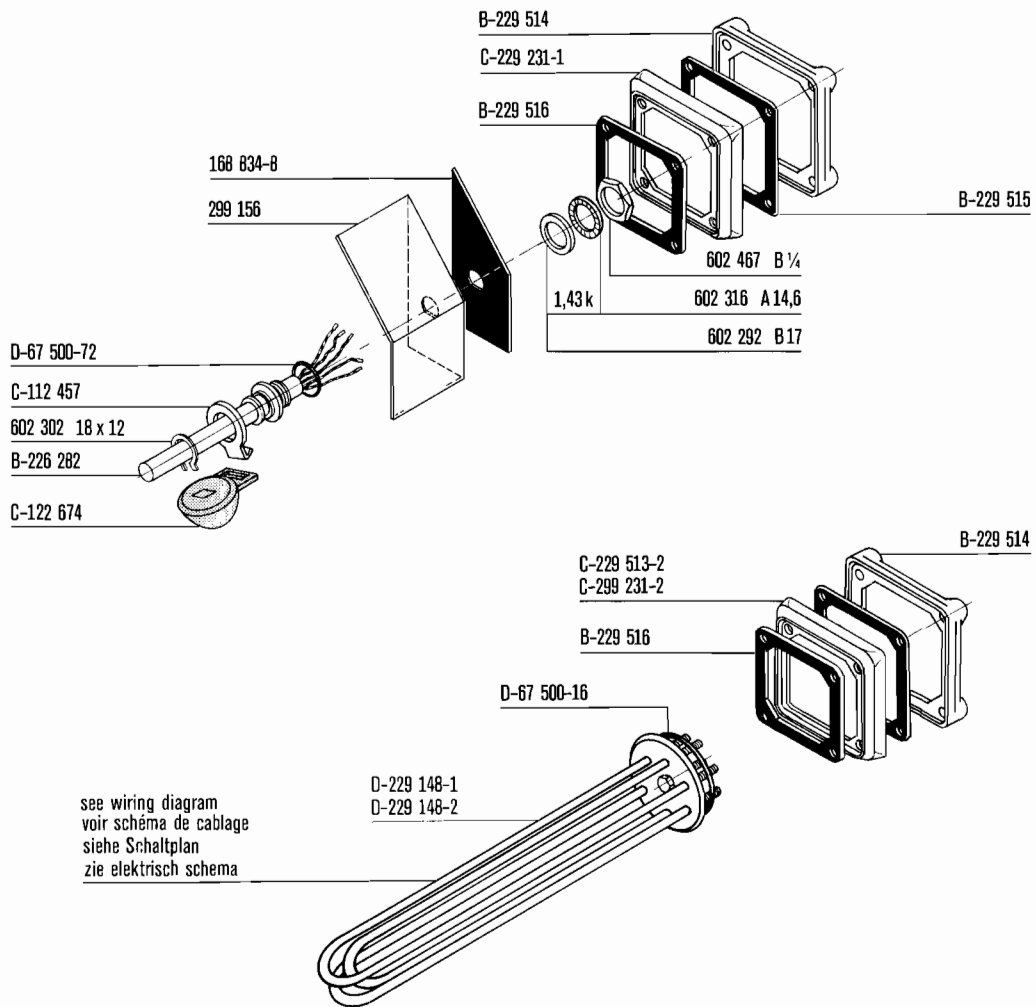


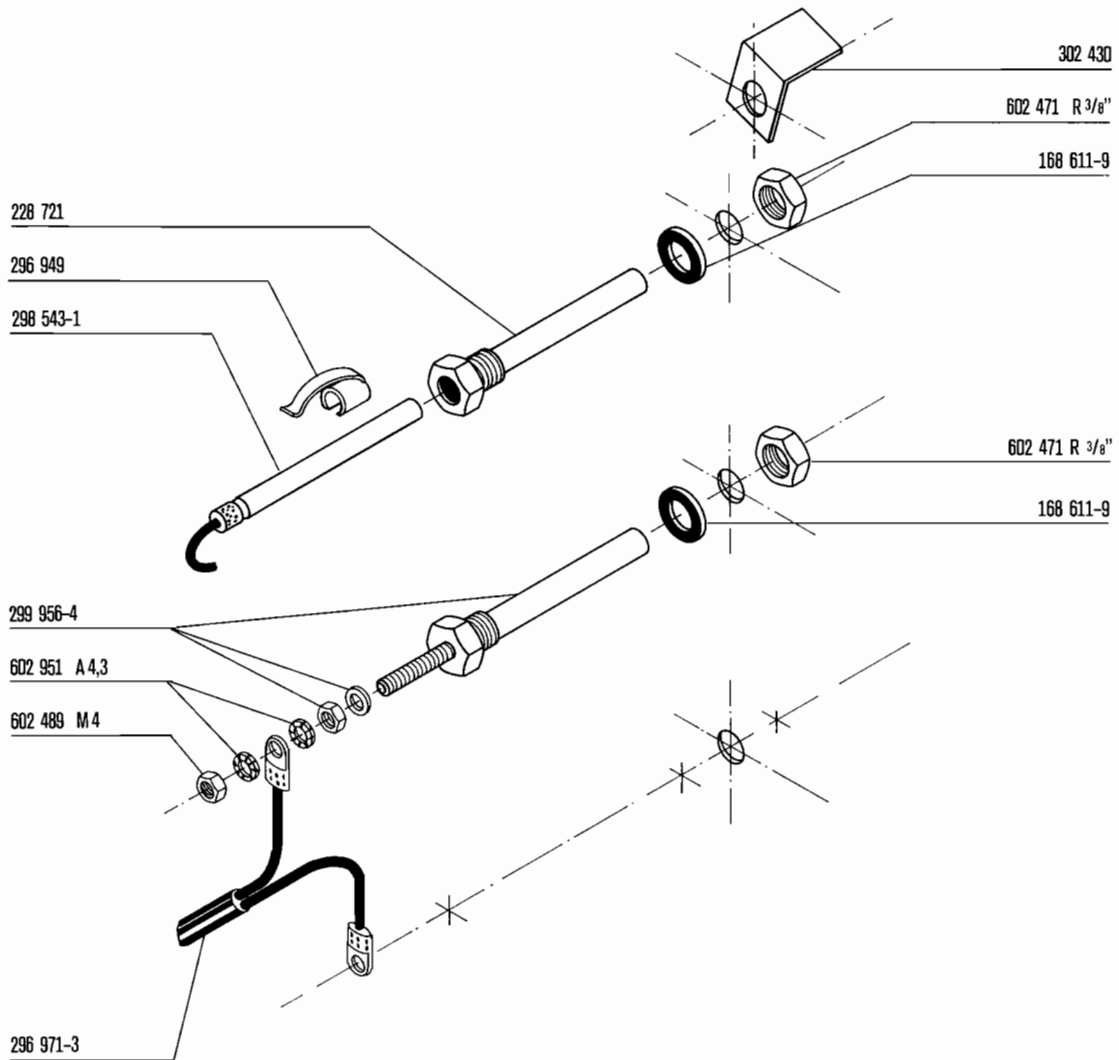


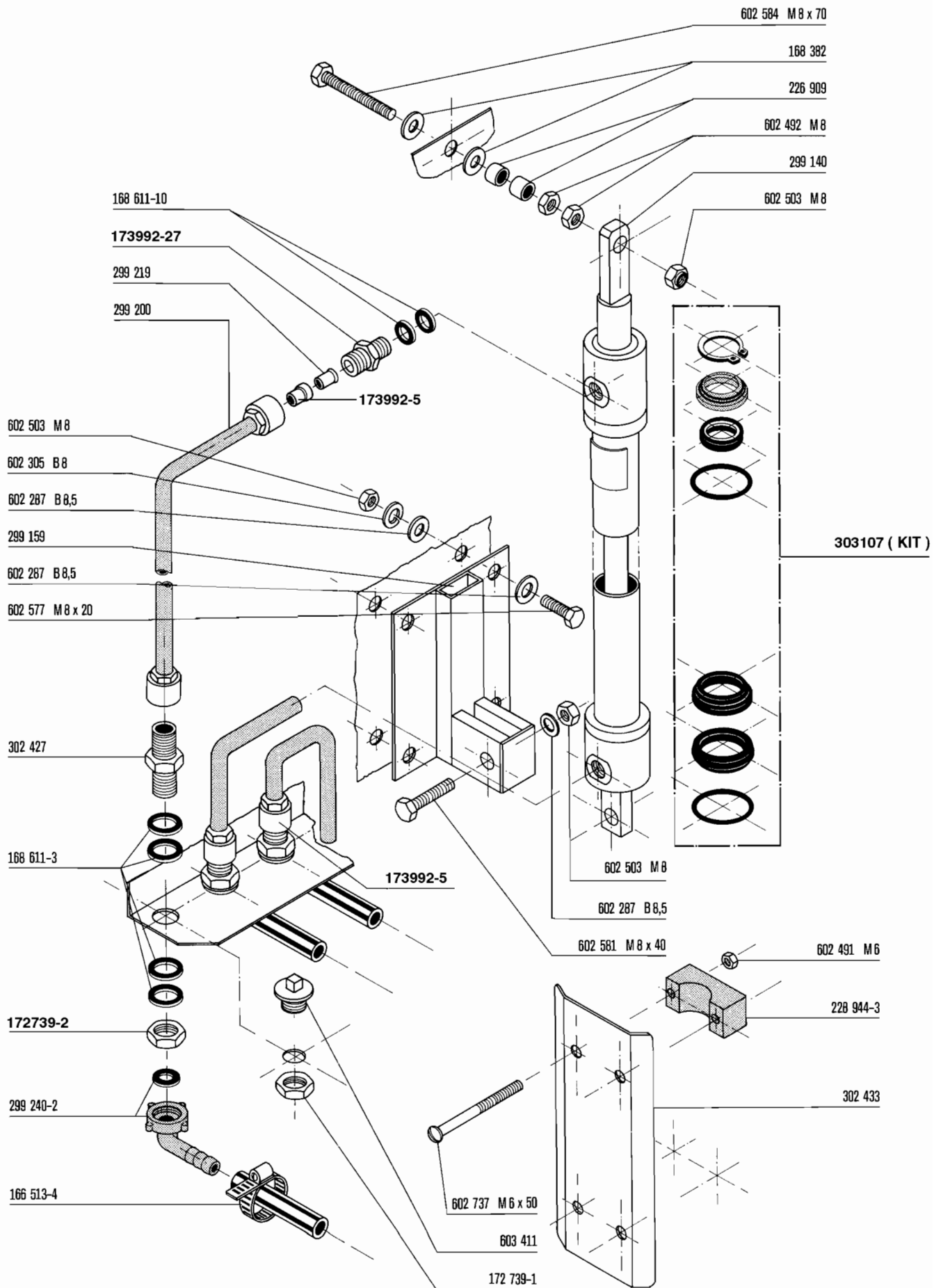


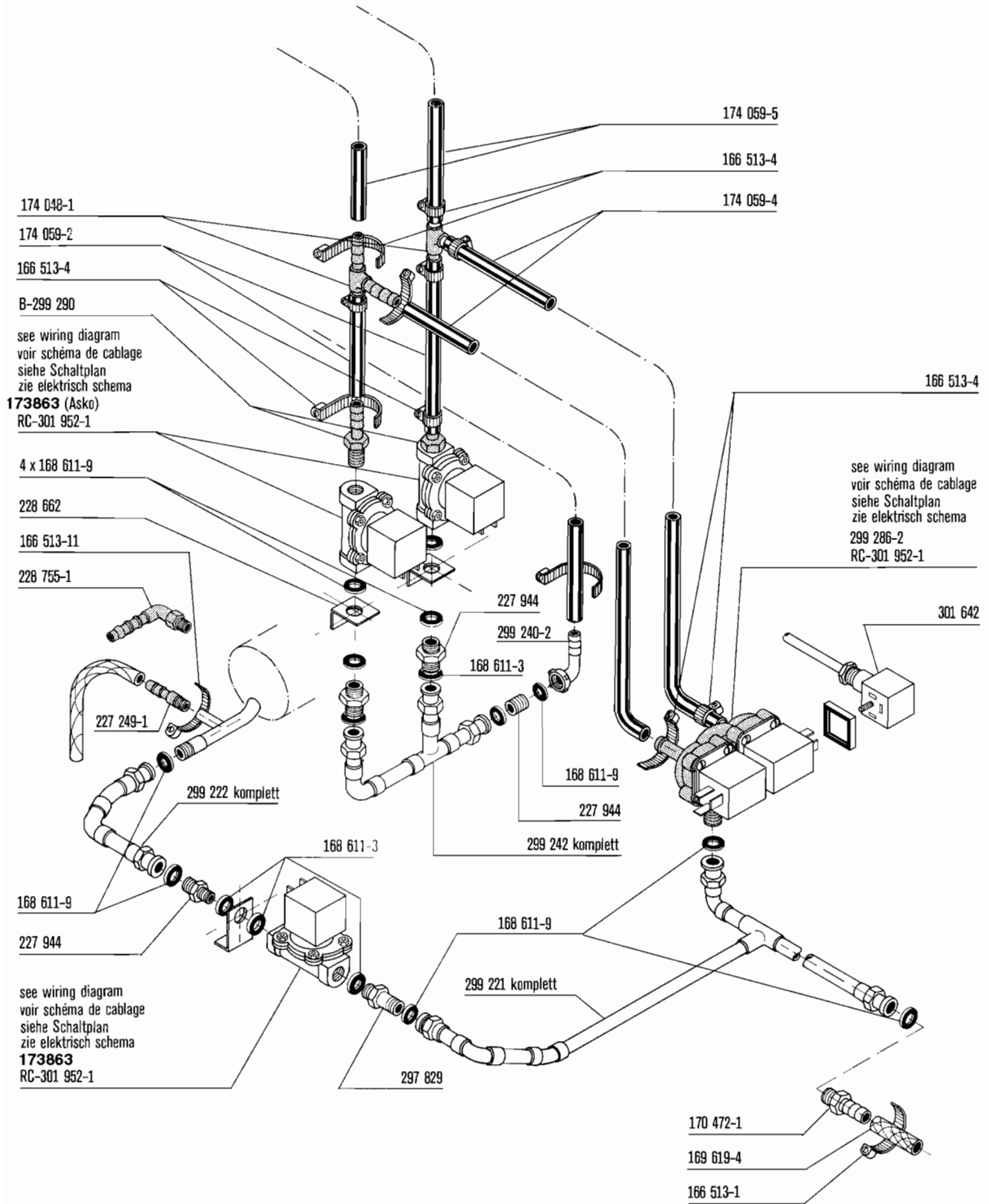


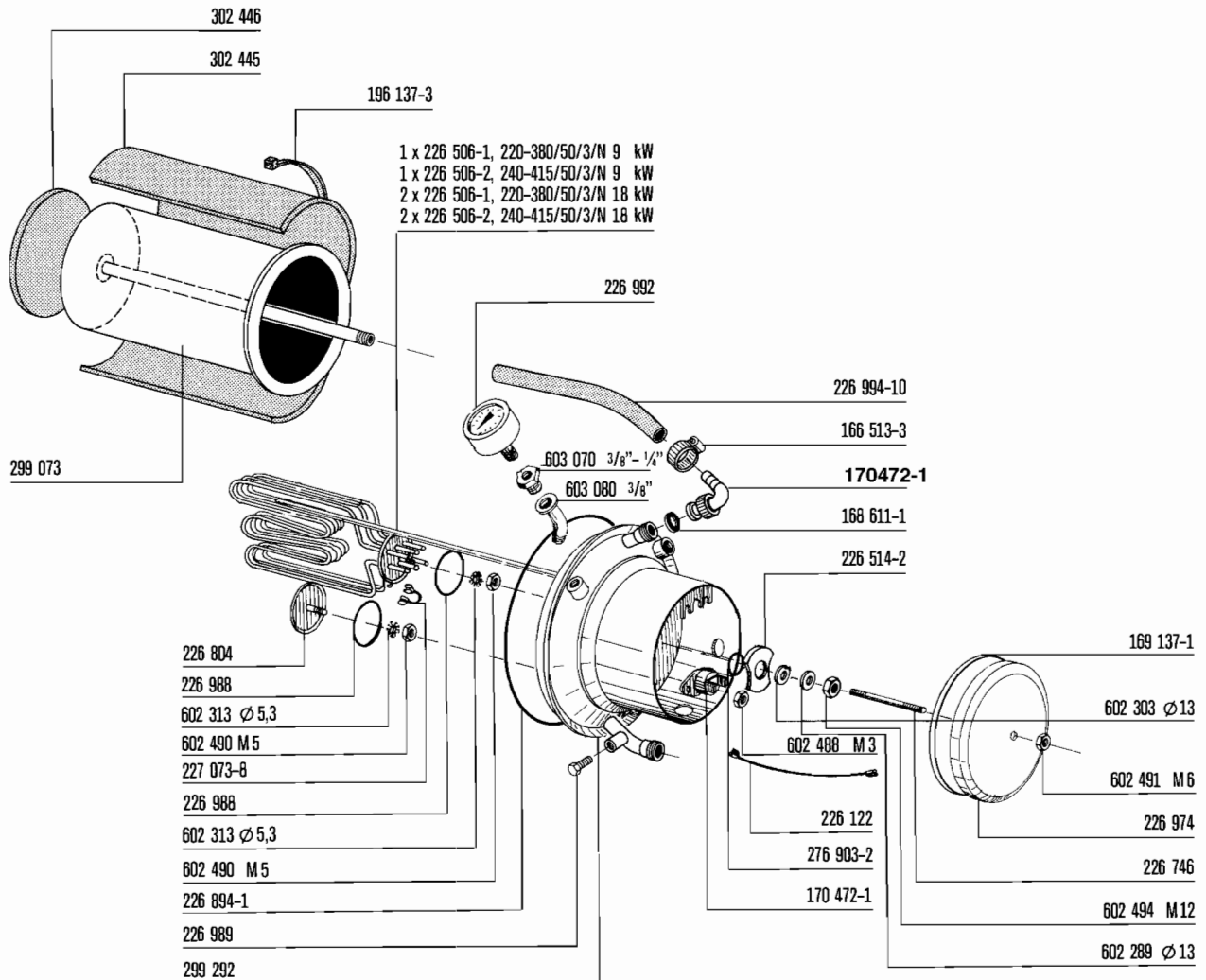




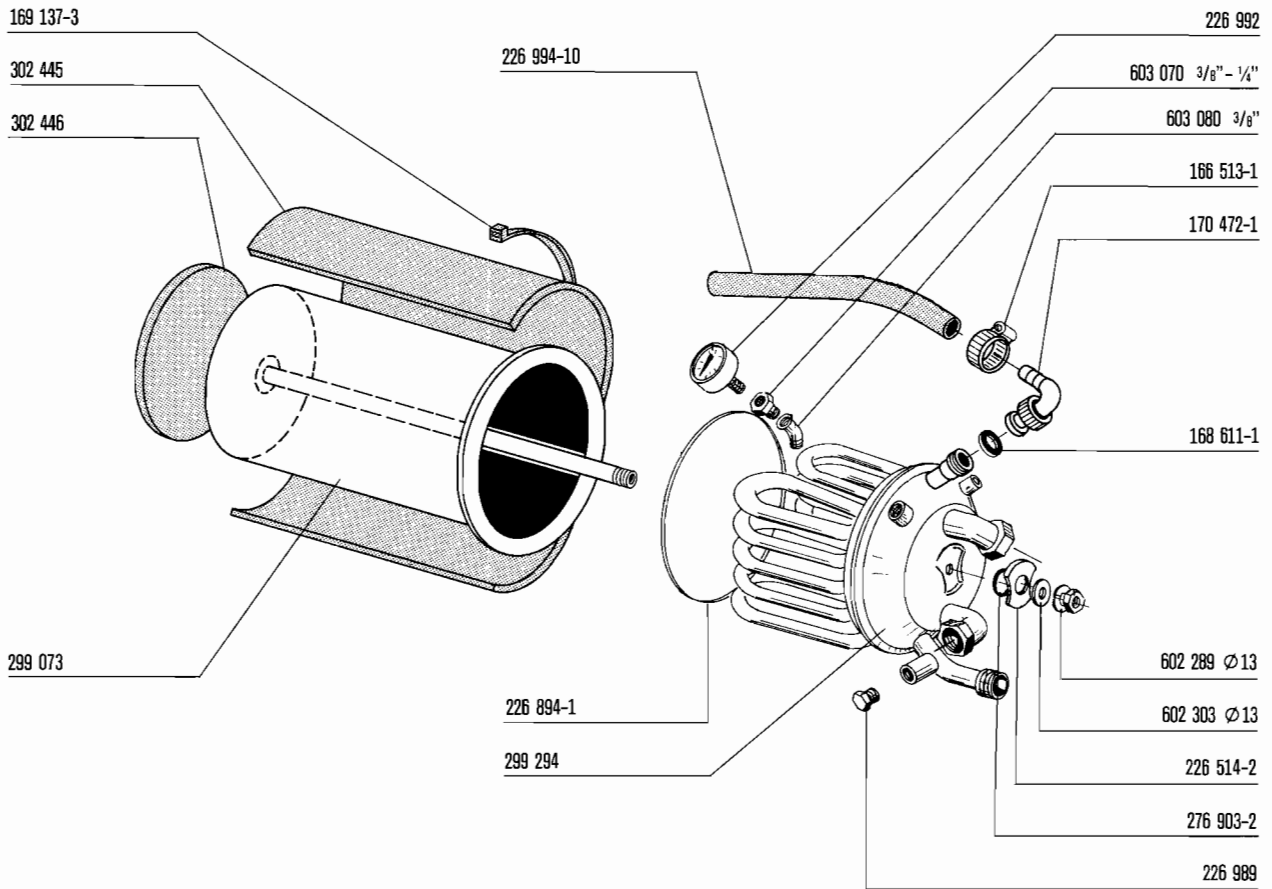


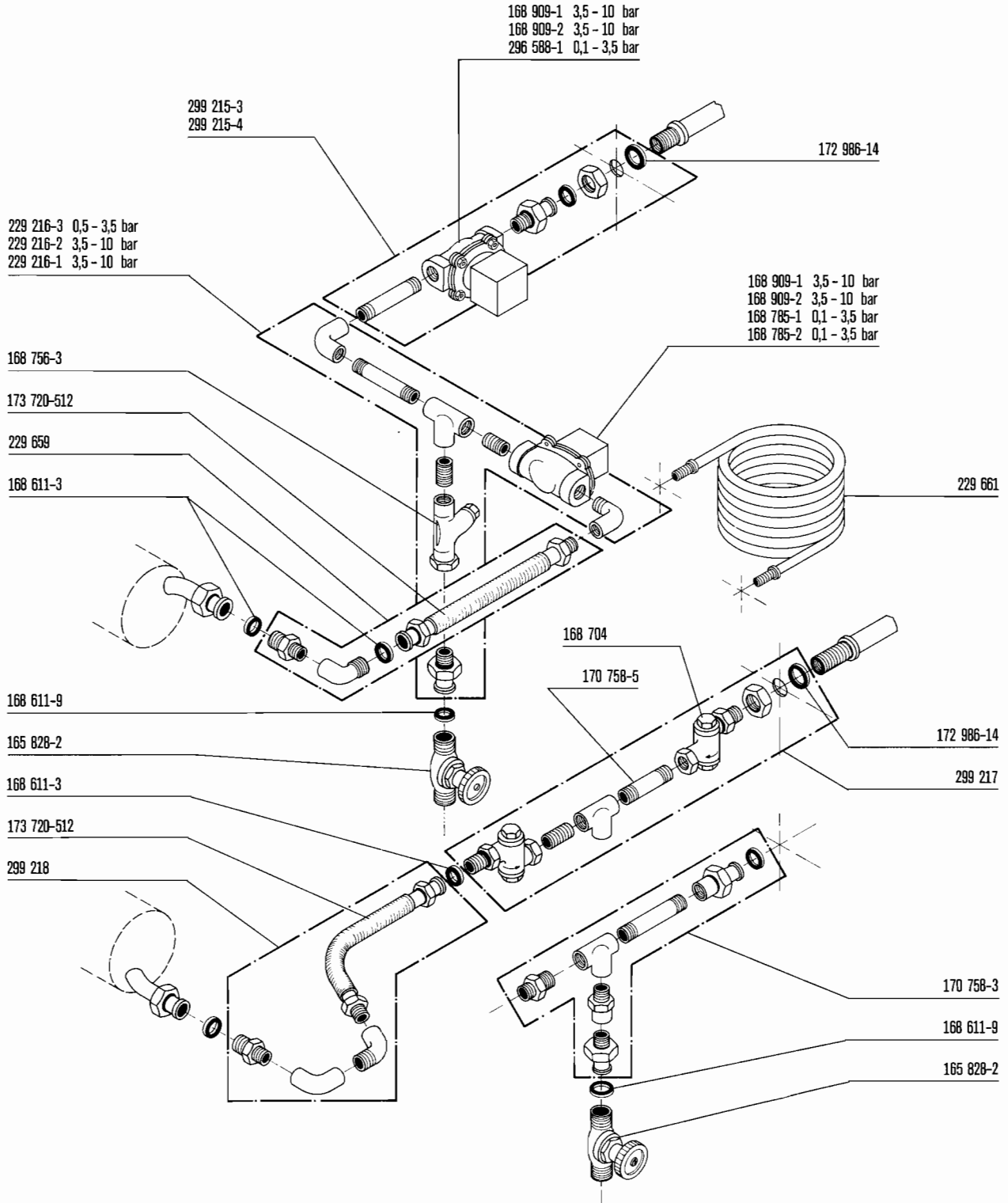


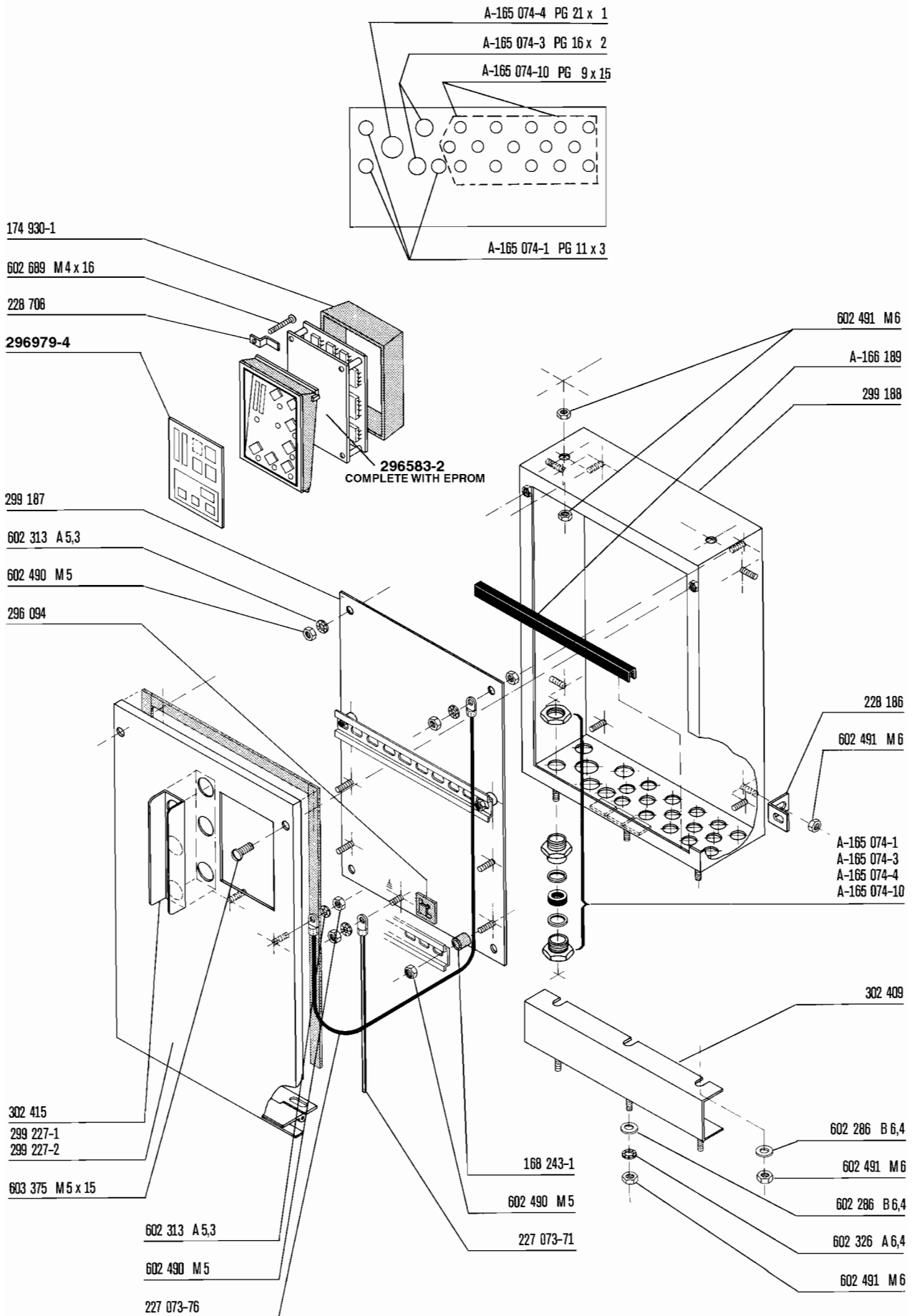


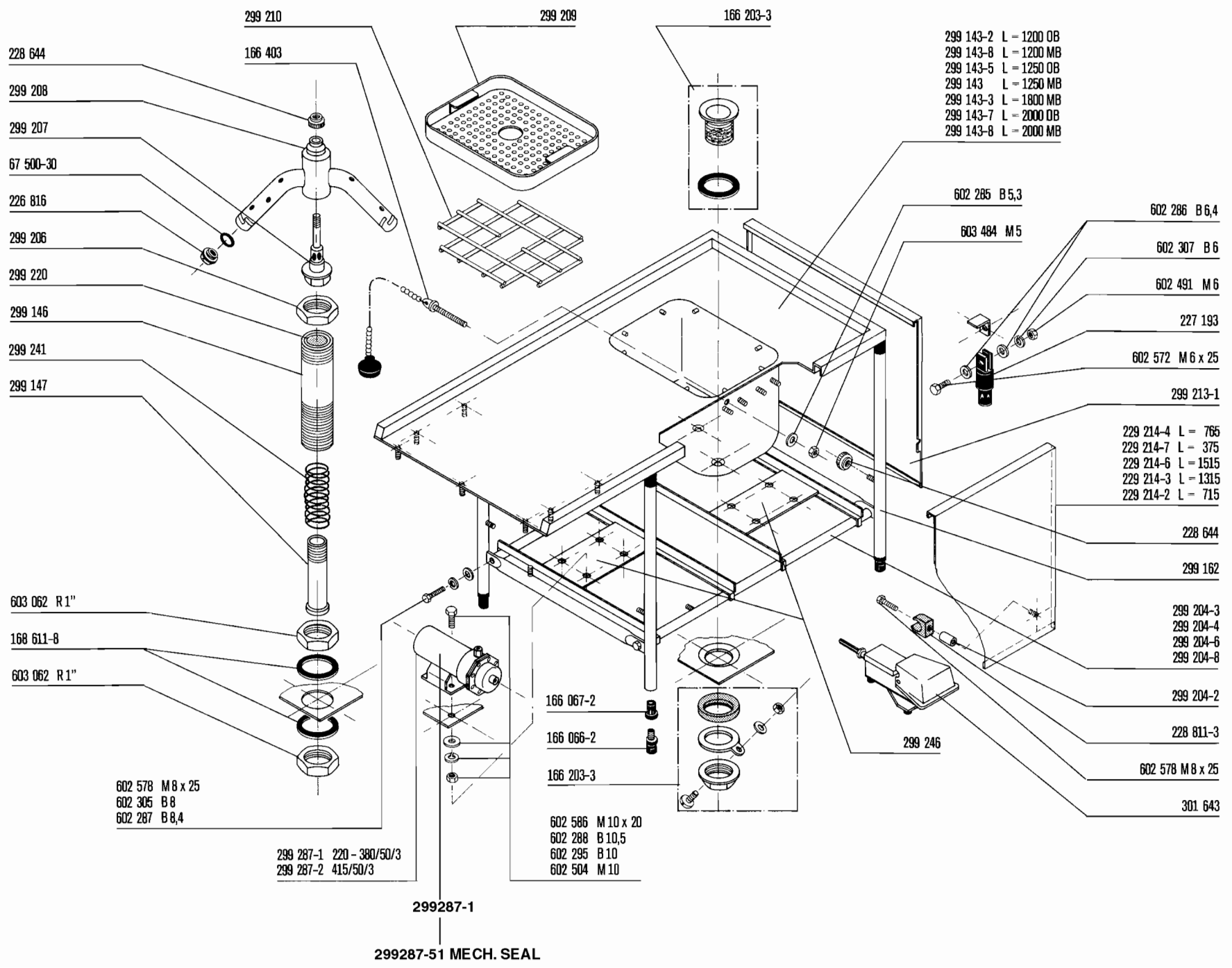


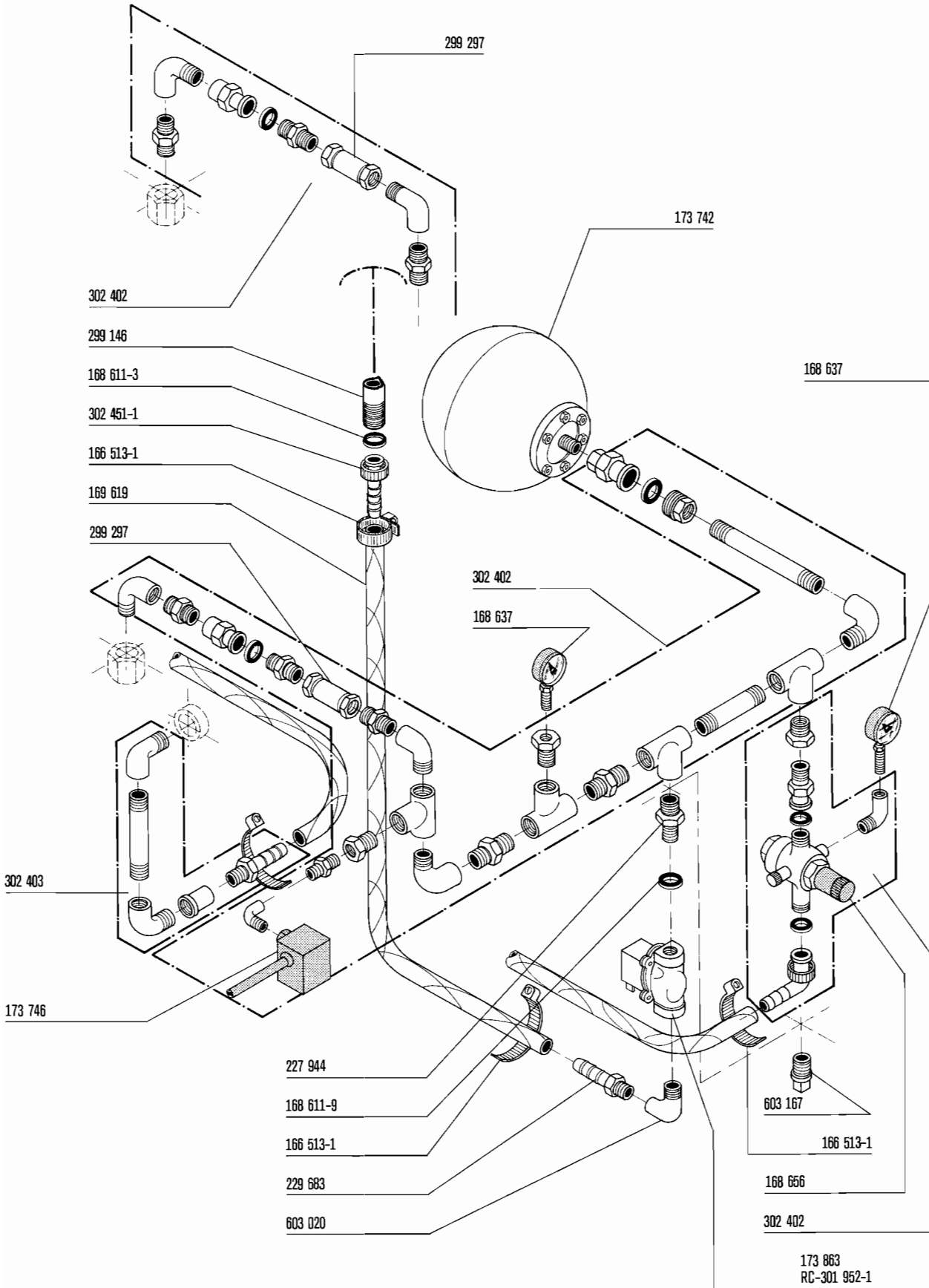


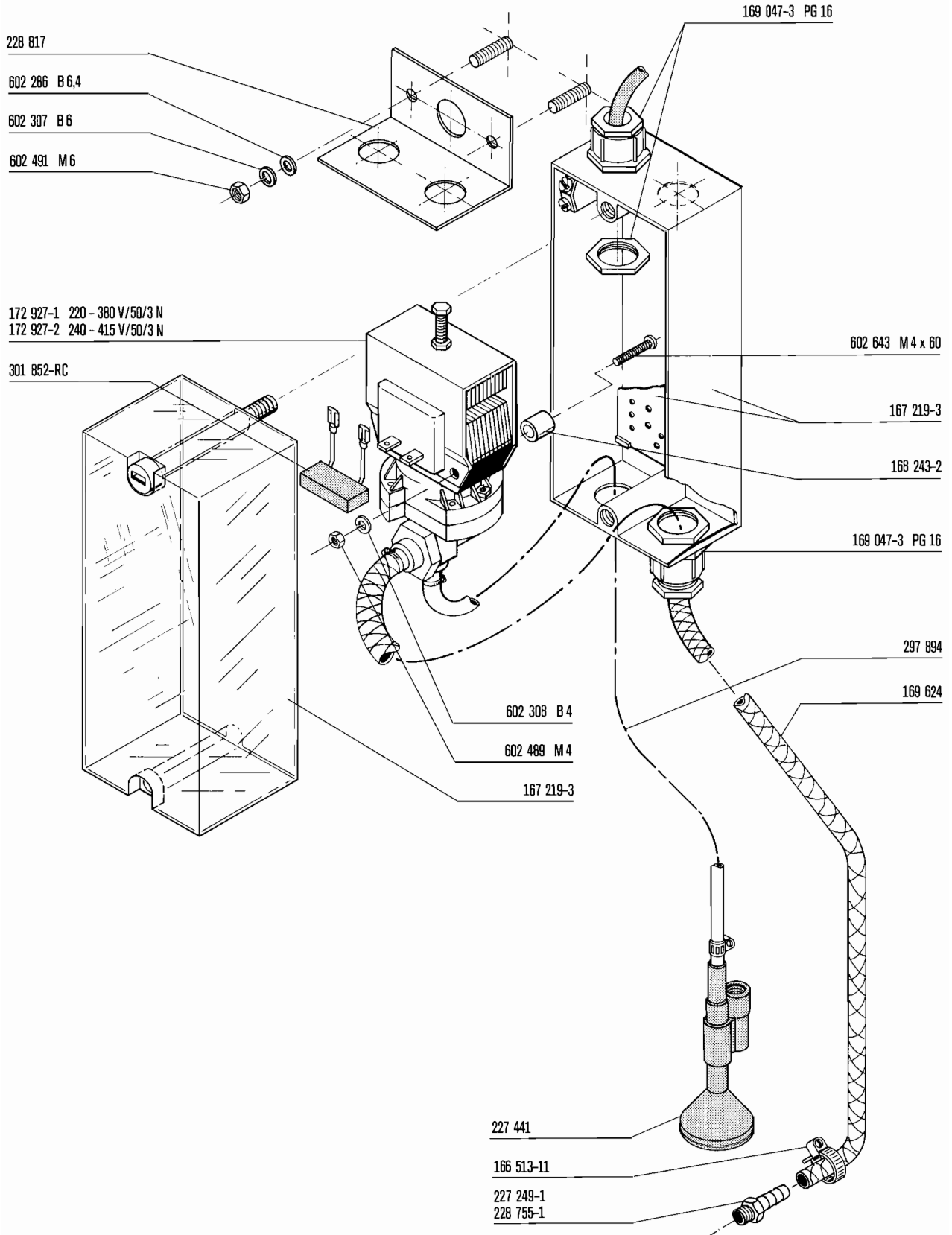


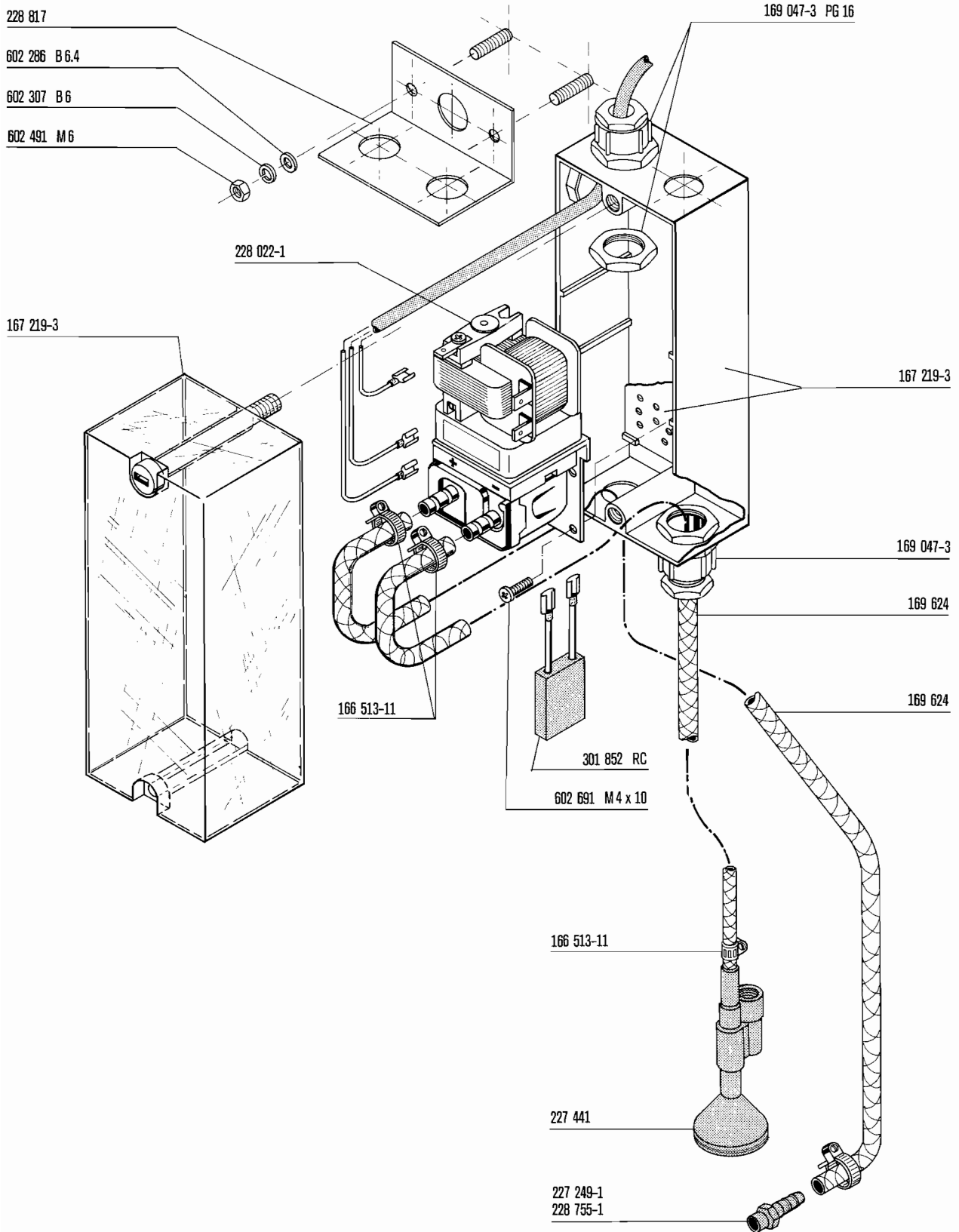


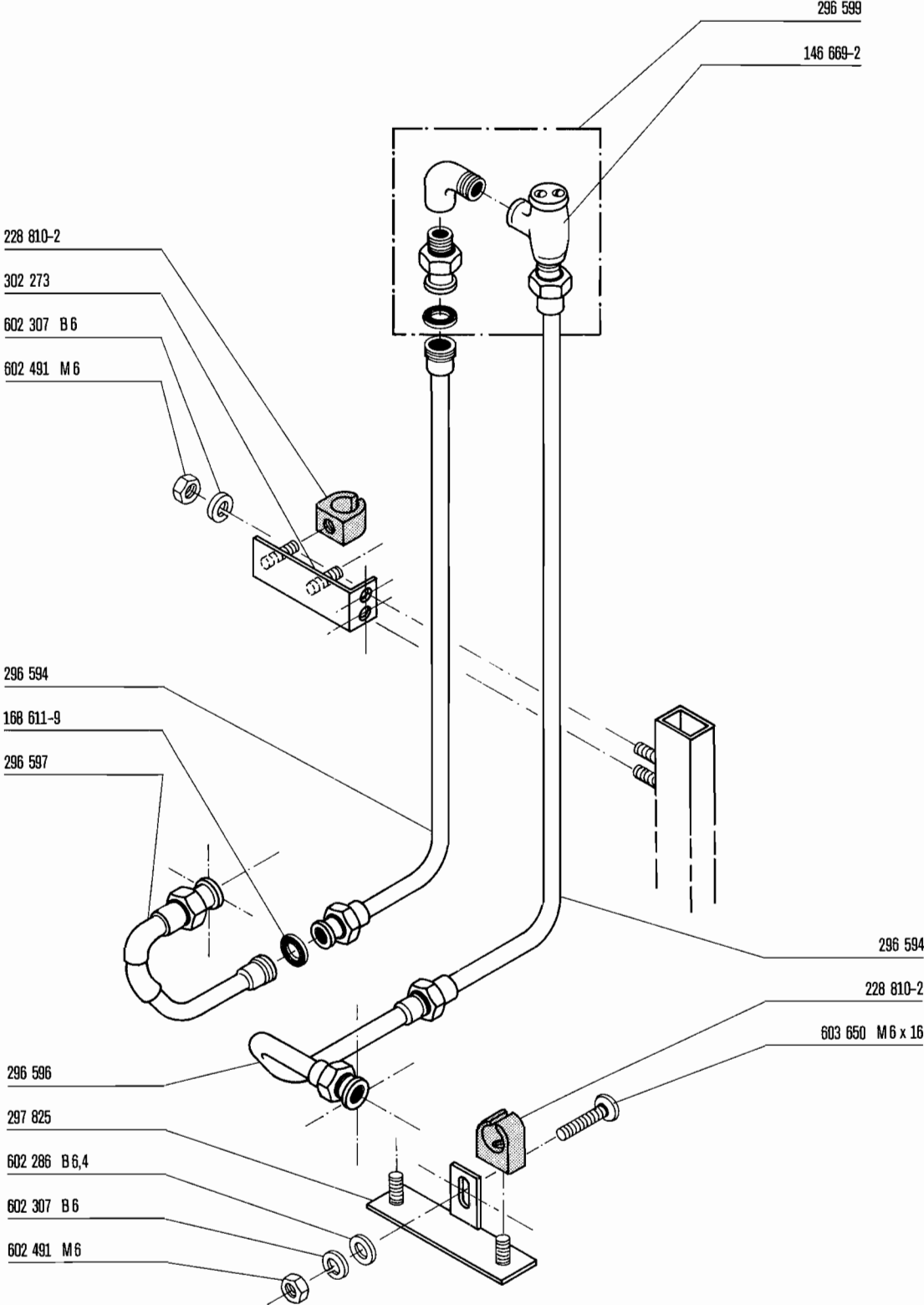




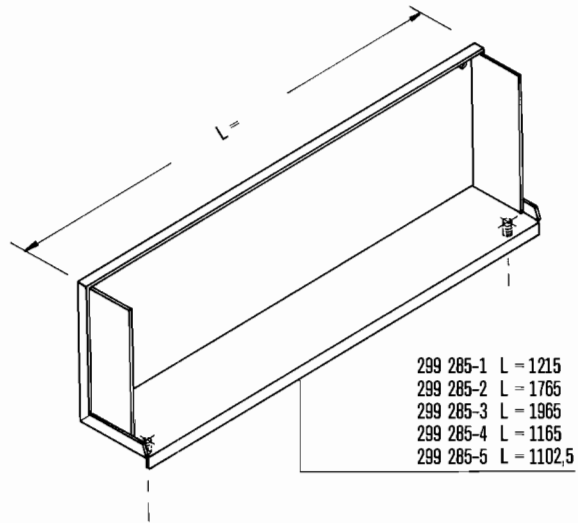














# UW135H

## Electrical Parts

ID No	Part No	Description
A1	174930-2	Control PCB
1B1	298543-2	Thermistor, Right Side Mounted Control Panel
1B1	298543-1	Thermistor, Left Side Mounted Control Panel
2B1	298543-2	Thermistor, Left Side Mounted Control Panel
2B1	298543-1	Thermistor, Right Side Mounted Control Panel
B2	299956-4	Probes, Wash Dispenser
B3	226504	Thermostat, Booster
B4	229519	Float Switch
F1	167027-26	Circuit Breaker, Tank Heating
F2	167027-25	Circuit Breaker, Booster Heating
F4	167027-15	Circuit Breaker, Control Circuit
K1	174973-2	Contactor, Wash Pump
K2	232478-2	Contactor
K3	229581-2	Contactor, Booster Heating
K4	229582-2	Contactor, Tank Heating
K5	174909-2	Time Delay
M1	229136-26	Wash Motor
M2	299287-2	Booster Pump
Q1	228717-8	Overload, Wash Motor
Q2	228717-3	Overload Booster Pump
R1	229148-2	Heater Wash Tank
R2	226506-2	Heater Booster
1S1	302440-1	Hood Switch Lower
2S1	302440-1	Hood Switch Upper
S2 / S3	301670-1	Push Button, Hood Actuator
S4	174905-3	Push Button Illuminating
S6	301643	Foot Switch
Y1	173863	Solenoid Valve
Y2	229286-2	Solenoid Valve
X1	229870	Terminal Block
X2	296920-1	Terminals
X2	296921-1	Terminals
	173742	Pressure Vessel
	299287-51	Seal Kit for Rinse Pump